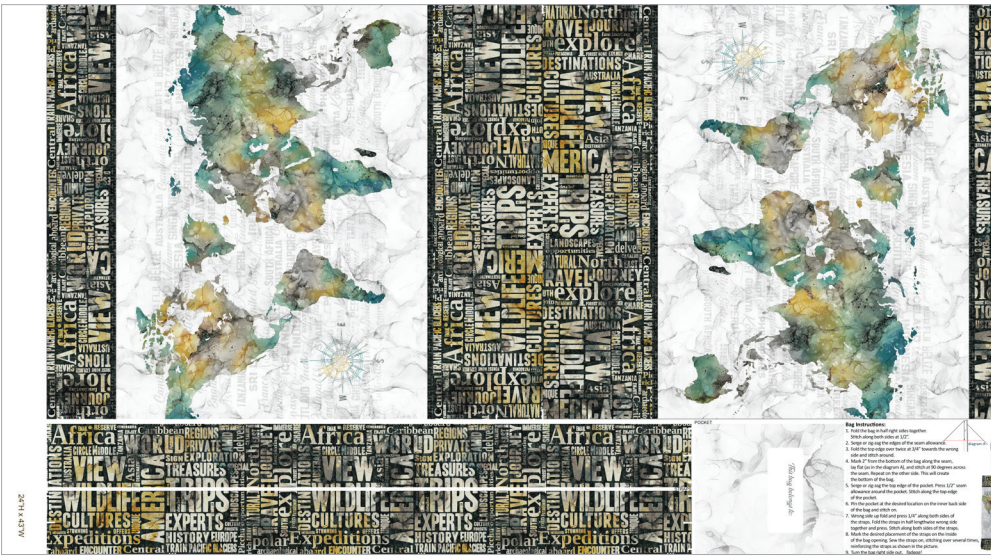


# Journey

by Melanie Samra



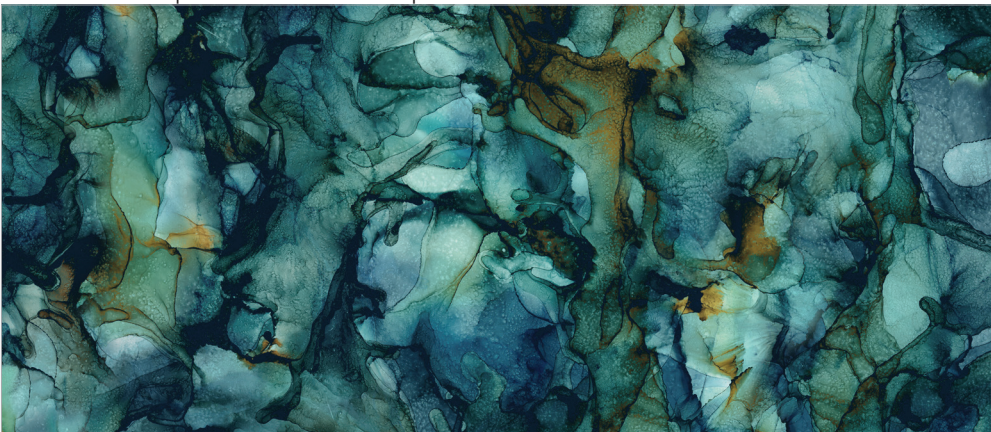
DP23890-10 Map Panel 28"-White Multi



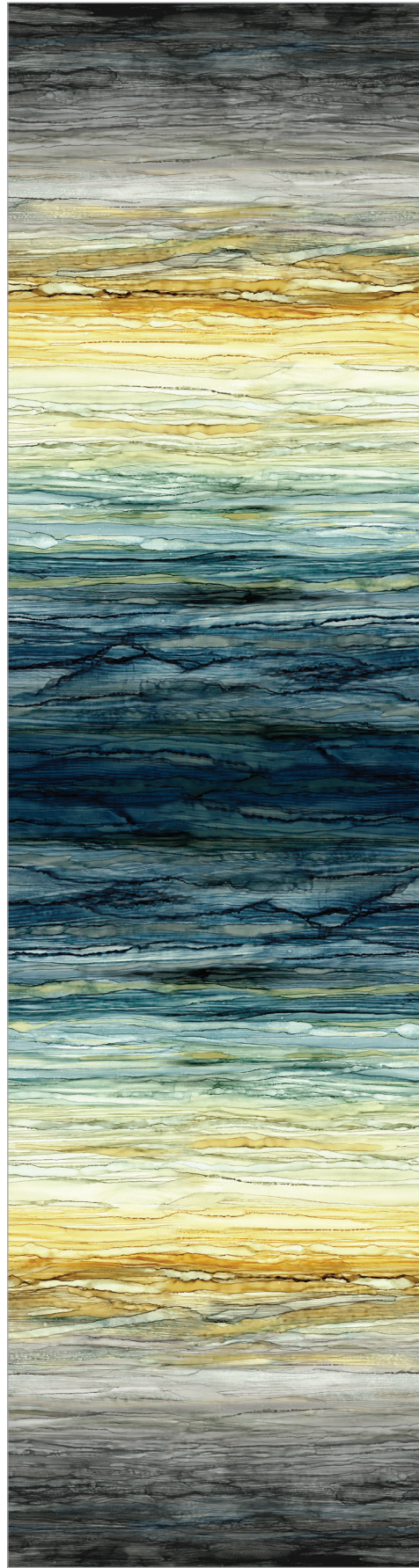
C23903-10 Journey Bag Panel 24"-White Multi



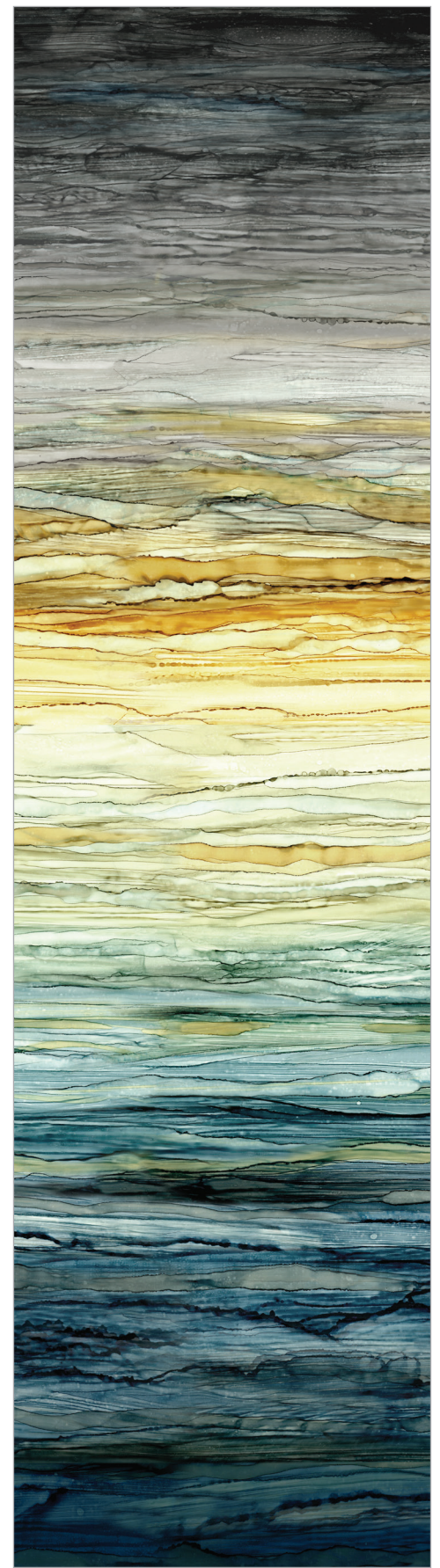
DP23892-10 | Around the World | White Multi



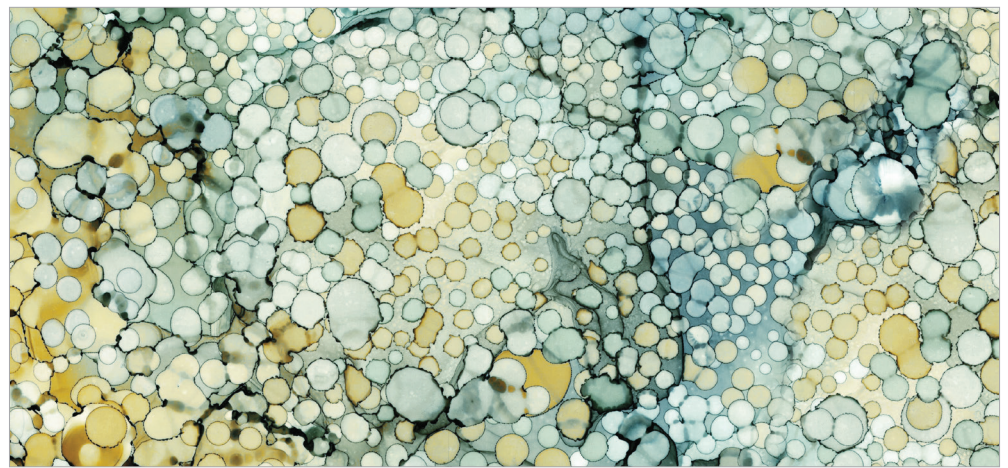
DP23896-64 | Tidal Pool Texture | Teal Multi



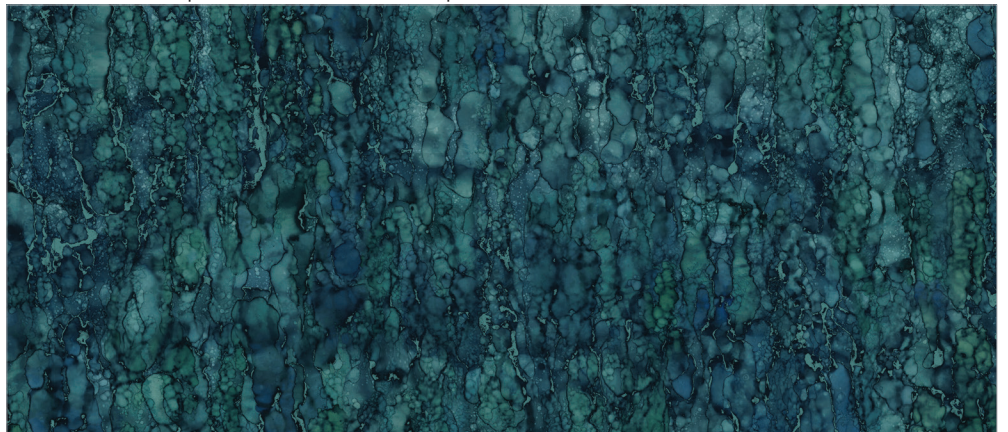
B23891-62 | Ombre Wide Backing



DP23891-62 Full Width Ombre-Teal Multi



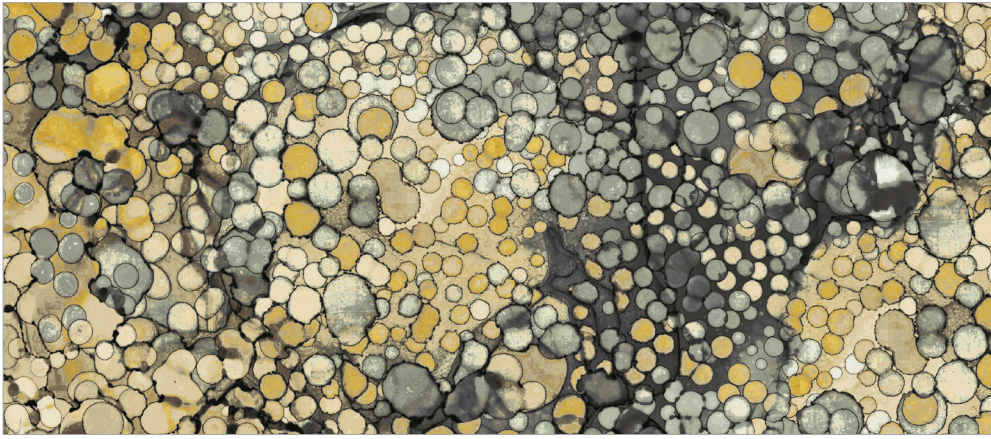
DP23899-62 | Bubble Texture-Teal | Multi



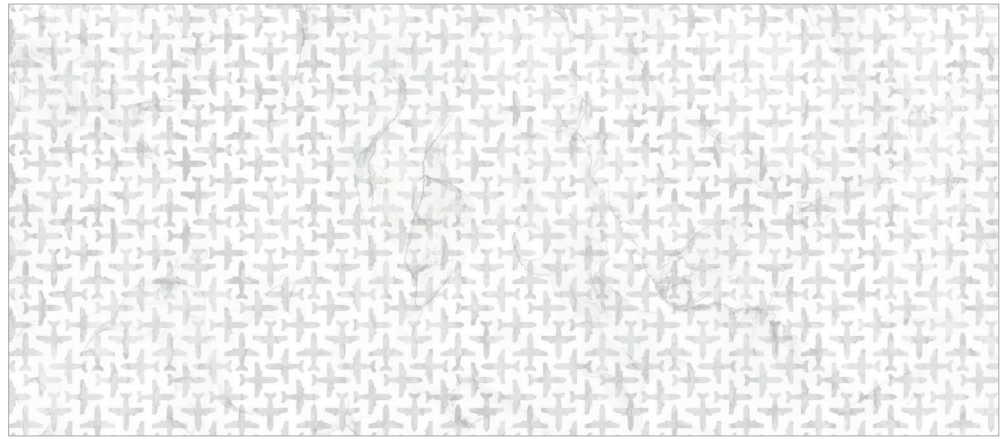
DP23901-66 | Vertical Texture | Dark Teal

# Journey

by Melanie Samra



DP23899-94 | Bubble Texture | Gray Multi



DP23902-98 | Airplane Texture | Charcoal



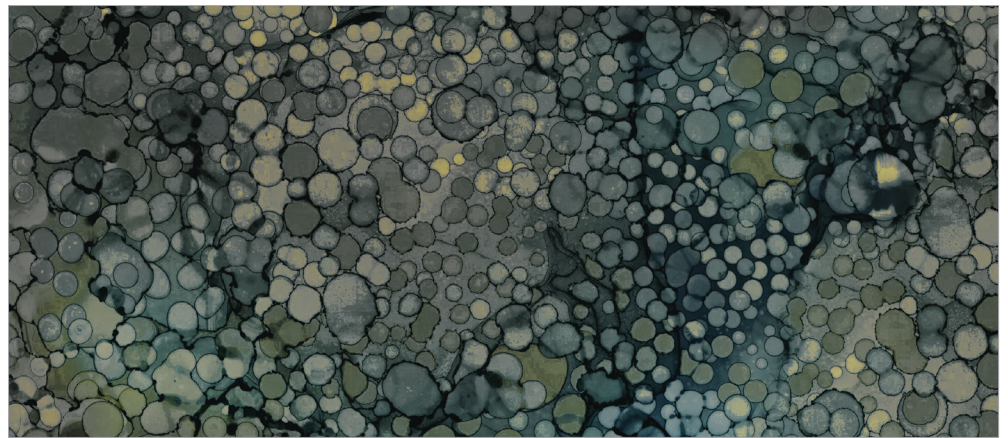
DP23894-52 | Large Travel Script | Ochre Multi



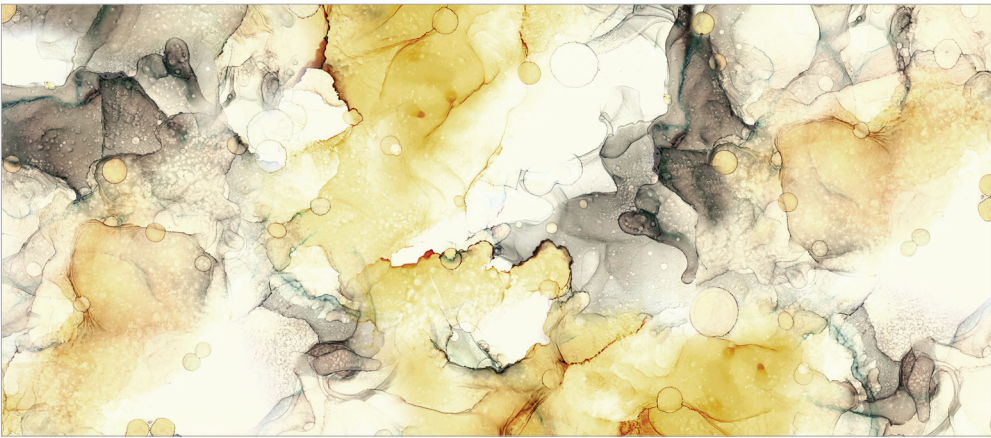
DP23894-98 | Large Travel Script | Charcoal Multi



DP23900-52 | Street Map | Ochre



DP23899-98 | Bubble Texture | Charcoal Multi



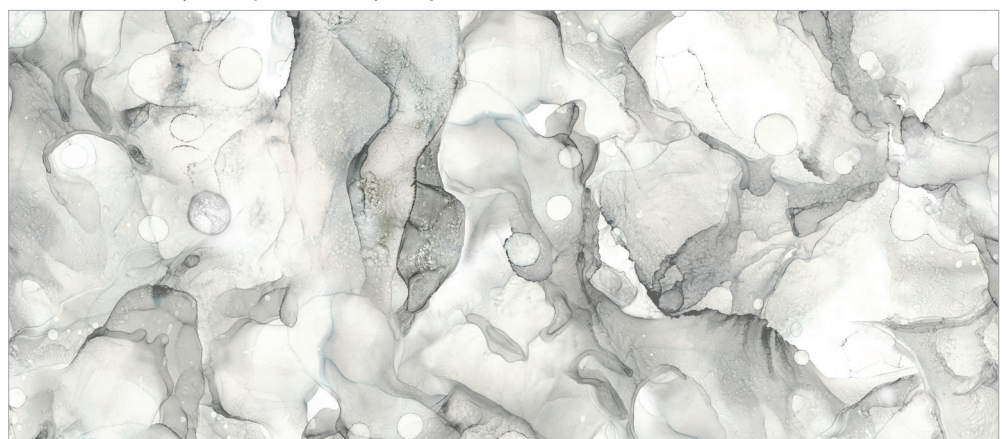
DP23897-93 | Reflections Texture | Ochre Multi



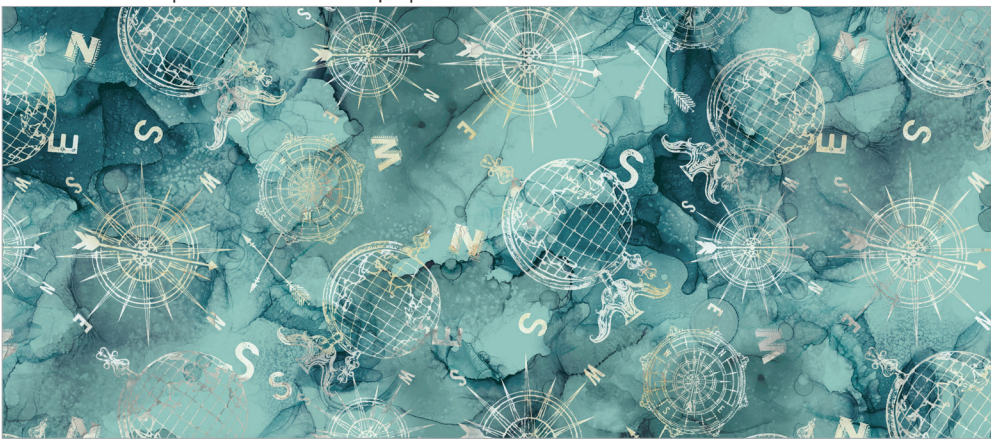
DP23893-93 | Compass Toss | Gray



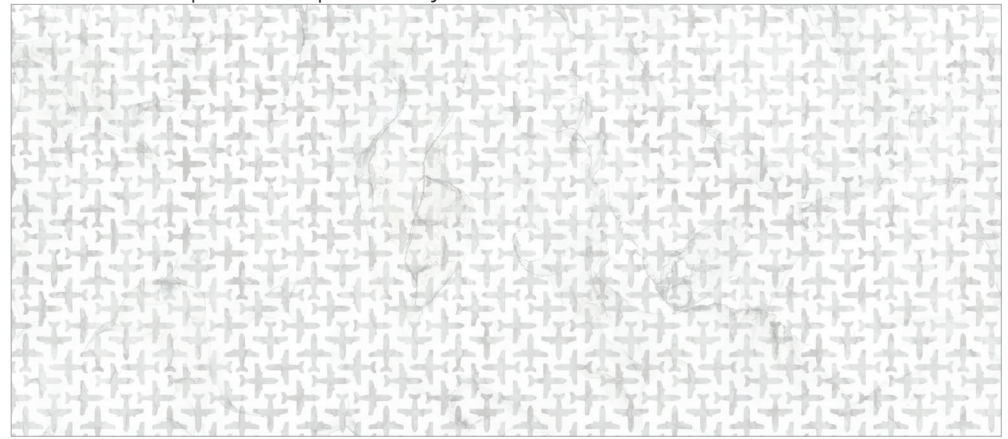
DP23895-10 | Small Travel Script | White Multi



DP23898-91 | Ink Wash | Pale Gray



DP23893-63 | Compass Toss | Teal



DP23902-10 | Airplane Texture | White

# Journey

by Melanie Samra

Created by Melanie Samra, Journey is a modern take on a classic travel theme. Let the journey begin with this collection of exquisitely detailed textures and blenders that complement the travel themed focal prints in a wide range of colors and values, all hand painted with a combination of alcohol ink and watercolor techniques. The 28" panel print features a world map ideal for any project or stretched over a frame to create popular wall decor. Journey also includes a fashionable travel tote printed on Northcott's premium quality, heavy weight canvas. A palette of complex urban hues from the deepest shades of charcoal, teal and ochre to the softest tints of celadon and silver lining characterize the collection. A selection of Toscana colors completes the coordination.